



TECHNIUM
SOCIAL SCIENCES JOURNAL

Vol. 24, 2021

**A new decade
for social changes**

www.techniumscience.com

ISSN 2668-7798



9 772668 779000

Psychosocial aspects of choosing a couple partner

Mariana Floricica Călin¹, Mihaela Luminița Sandu²

^{1,2}Ovidius University of Constanta, Faculty of Psychology and Educational Sciences

mariana.calin@365.univ-ovidius.ro, mihaela_naidin@yahoo.com

Abstract. We often meet in couple relationships imaginary or real people who are found between the two partners and who leave a significant influence on the evolution and quality of the couple's relationship. This aspect has been addressed by specialists in socio-psychology, who have looked at how couples who establish an ideal in their current or future partners are affected, so that now these studies have become theoretical information that brings a clarification on the ideals and idealization in couple relationships. Thus, several theories have been crystallized that explain these phenomenon.

Keywords. Aspects, psychosocial, choice, partner, couple

The theory of interdependencies and ideal people

Over the past decade, authors Jeffrey Simpson and Garth Fletcher have devoted their attention to a study that had as its starting point the identification of fundamental aspects in the process of idealization in relationships with close people, especially couples. After comparing the results, Simpson and Fletcher gave rise to the theory of interdependencies. This theory was the first theory that states that people have a "standard" for assessing couple relationships, targeting two specific standards:

1. the degree to which they receive certain benefits that they consider they deserve from their current partner;
2. the degree to which the current partner procures results that exceed those provided by the best available partner (Levitchi, A., C., 2011, pp. 90-91).

In other words, it was concluded that partners who feel that they receive more from their significant other are more likely to remain in the current relationship, while the partner who receives less than he thinks he deserves, poses a threat to the relationship and they can think there are other alternatives to rely on. Here it can also be a dose of subjectivism about the partner's expectations and how he perceives and self-evaluates. No wonder some people prefer to choose to remain in unsatisfactory relationships, along with the belief that they do not deserve something better. For this explanation, the authors Trihaut and Kelly came up with a addition in The Theory of Interdependencies.

They argue that the standard is based on a "level of comparison" which they defined as the results known to the person (by virtue of personal experience or shared by others), each result being weighted by its prominence or the degree to which it stands out for that person, at the moment" (Scott, S.,J., Davenport, B., 2018, p. 211).

Trihaut and Kelly also argue that this level of comparison is also based on the results that a person has experienced or witnessed in the life experiences of others and thus those results can actively become stimulating and integrate them into their own life.

The level of comparison can also be influenced by the individual's previous relationships, especially if they were unsatisfactory. Thus he will remain stuck at a certain level and this will make him either remain a prisoner in the same pattern of relationships, or, when he finds an "ideal" partner to whom to remain loyal to and decide that he is the best partner he can find, at least for now. If the relationship with an ideal partner will end with the rupture of the couple's relationship, then the level of comparison will change, depending on the experience lived within that couple's relationship..

In conclusion, we can say that partners who have higher ideal standards support the idea that they deserve more from their partner / relationship.

Discrepancy Theory

Forming and maintaining relationships is guided by more than similarities between real partners. The Discrepancy Theory is based on Higgins' (1987) theory of self-discrepancy and proposes the idea that there is a certain type of discrepancy that has not been considered before that is, discrepancies between the self aspects of relational partners, which are essential for knowing the relationship, including perceptions of intimacy and trust and the emergence of roles in relationships (Higgins, E., T., 1989, pp. 334-335).

The argument of current specialists who have come to meet the Theory of Discrepancy refers to both unconfined environments, in which individuals freely choose partners, and restricted environments (for example, jobs) with imposed relationships. They argue that predicting emotional consequences from discrepancies allows for a motivational account of why individuals might form and maintain relationships in terms of hierarchies and roles (Robins, G., Boldero, J., 2003).

The basic premise of the theory of self-discrepancy is that the relationships between different types of self-beliefs or representations of self-state produce emotional vulnerabilities rather than the content or particular nature of one's own self or that of any other individual. (Higgins, E., T., 1989).

In order to distinguish the different types of representations of the self-state, the discrepancy theory proposes two psychological parameters: the domains of the self and the points of view on the self. However, the effect of the size of different types of discrepancies on the intensity of different types of discomfort was tested. In order for the vulnerability associated with a certain pattern of self-belief to occur in an episode, i.e. an occurrence of suffering, the self-belief model must be activated (Vendemia, J., M., C., 2012).

The discrepancy theory explains the various factors that can increase the probability that a stored construction will be activated. One source of activation is the applicability of the construction to a stimulus event. According to this theory, the inter-relationships between the attributes that constitute an effective self-guide discrepancy represent, on the whole, a negative psychological situation that functions as a construction. Thus, the negative psychological situation represented by such a discrepancy and the emotional-motivational state associated with it are more likely to be activated when the negative psychological situation is applicable to a stimulus event than when it is not applicable.

The structure and content of the relationship partner-ideals

The ideal of relationship and partner are central components of the civil mind that people use to guide and regulate the interpersonal world. According to the current model, the ideals

regarding partners and the relationship can also precede the influence of important judgments and decisions in relationships. This structure comprises three interlocking components:

- self-perceptions;
- partner (Campbell, L., at all, 2016, p. 445-447).

For example, the ideal of a person who is "beautiful and warm" is an image or vision held personally and specifies the pattern of the individual and his desires. According to this model, the ideals of the relationship with the partner should be based around three evaluative dimensions:

1. warmth, commitment and intimacy;
2. health, passion and attractiveness;
3. status and resources.

These predictions suggest that each of these dimensions represents a "different path to obtaining a partner and promoting one's own form of reproduction." (Sprecher, S., 2018).

For example, by paying attention to the partner's capacity for intimacy and commitment, a person should increase their chances of finding a cooperative partner, committed, who (probably) will become a true parent. By focusing on attractiveness and health, it is possible for an individual to acquire a partner who is younger, healthier and implicitly more fertile (especially for men who choose women).

And taking into account the sources and status of the partner, an individual may be more likely to obtain partners with whom he can rise hierarchically in society and form coalitions with other people who have or can accept a valuable social status or other resources.

The above model, which includes the standards of ideals, proposes that the ideals of the partner and the relationship fulfill three functions: evaluation, explanation and regulation.

Specifically, the size of the discrepancies between ideal standards and perceptions of the partner or current relationship should be used by individuals to:

- estimating and evaluating the quality of partners and relationships (for example, to assess the adequacy of potential or current partners or relationships);
- explain or provide an understanding of relationship events (e.g., satisfying relationships, problems, or conflicts) or presenting causal accounts;
- to regulate and make adjustments in relationships (Fletcher, G., J.O., Simpson, A., 2000)

The social dimension

Responsible for values, norms, rules and roles is represented by one of the greatest sources of influence on human behavior, which springs from the social dimension. In terms of the social dimension, the most important issue seems to be how it is possible to work out differences of opinion and interest between us as individuals and gain the acceptance of others. (Stichweh, R., 2015).

In the area of couple relationships, the social dimension refers to the elements that contribute to the formation of a couple, as well as the factors that lead to its development.

Interpersonal attraction is the attraction between people that leads to the development of platonic or romantic relationships. It is distinct from perceptions of physical attractiveness and involves opinions about what is and what is not considered beautiful or attractive.

The study of interpersonal attraction is a major field of research in social psychology. Interpersonal attraction is related to how much we like, dislike or hate someone. It can be seen as a force acting between two people, which tends to unite them and resist until their separation. When measuring interpersonal attraction, we must refer to the qualities of the person attracted

and those of the attractor to obtain predictive accuracy. It is suggested that both personalities and situation should be considered in determining attraction. (Byrne, D., Griffitt, W., 2017).

In social psychology, interpersonal attraction is most commonly measured using the Interpersonal Attraction Judgment Scale developed by Donn Byrne. This is a scale in which a subject evaluates another person on factors such as: intelligence, knowledge of current events, morality, adjustment, probability and desirability as a work partner. This scale seems to be directly related to other measures of social attraction, such as: social choice, feelings of desire for a date, sexual partner or spouse, voluntary physical proximity, frequency of eye contact, etc. (Jamieson, D., et al, 2016).

There are several factors that lead to interpersonal attraction. Studies suggest that all factors involve social consolidation. The most frequently studied include physical attractiveness, inclination (frequency of interaction), familiarity, resemblance, complementarity, mutual pleasure and reinforcement. The impact of familiarity, for example, is shown in how physical closeness and interaction strengthen cohesion, a social concept that facilitates communication and a positive attitude towards a particular individual because of similarities or the ability to meet important goals. Resemblance could lead to pleasure and attraction rather than differences. Numerous studies have focused on the role of physical attractiveness to personal attraction. One finding was that people tend to attribute positive qualities, such as intelligence, competence, and warmth to people who have a nice physical image.

The kinship effect is based on the observation that "the more we see and interact with a person, the more likely they are to become our sexual friend or partner." This effect is very similar to the simple effect of exposure in that the more a person is exposed to a stimulus, the more they like it; however, there are exceptions. Familiarity can also occur without physical exposure. Recent studies show that relationships formed on the Internet are similar to those developed face to face, in terms of perceived quality and depth (Crăciun, D., 2004, pp. 129-130).

The exposure effect, also known as the familiarity principle, states that the more exposed a person is to something, the more he likes it. This applies equally to both objects and people. However, exposure does not always increase attraction. For example, the effect of social allergy may occur when one person becomes increasingly angry and hypersensitive to the repeated behaviors of another, instead of falling more in love with his idiosyncrasies over time (Cunningham, M., R., et al, 2005).

The similarity-attraction model, according to Morry's (2007) model, there is a secular belief that people with real similarity produce an initial attraction. The perceived resemblance is either self-service, as in a friendship, or relationship, as in a romantic relationship. In addition, it was found that the similarity perceived, but not actual, predicts interpersonal attraction during an initial face-to-face romantic encounter.

The importance of physical appearance stems from the matching hypothesis proposed by sociologist Erving Goffman, who suggests that people are more likely to form long-term relationships with those who are just as fit in social attributes as physical attractiveness.

The study by researchers Walster and Walster supported this hypothesis by showing that partners who were similar in physical attractiveness expressed the greatest pleasure for each other.

Voice quality has also been shown to enhance interpersonal attraction. Studies have shown that when people rate their voice as attractive, they also tend to rate that person as attractive (Zuckerman, M., et al, 1991).

Attitudes, according to Byrne's law of attraction (1971), tell us that attraction to a person is positively related to the proportion of "similarity to attitude" associated with that person. Based on theories of cognitive coherence, the difference in attitudes and interests can lead to discomfort and avoidance, while similarity in attitudes promotes social attraction. At the same time, other social and cultural aspects are taken into account, as some psychologists have suggested. This theory explains how people with similar economic status could be attracted to each other. People also prefer their romantic partners to be similar in certain demographic characteristics, including religious context, political orientation, and socioeconomic status. The researchers showed that interpersonal attraction was positively correlated with personality similarity. People are inclined to want romantic partners who are similar to themselves through agreement, conscientiousness, extroversion, emotional stability, openness to experience, and style of attachment. (Singh, R., 2010).

The complementarity model explains whether "those who resemble each other gather" or "opposites attract". Studies show that the complementary interaction between two partners increases their attractiveness to each other. Complementary partners preferred a closer interpersonal relationship (Byrne, D., et al, 2015).

A social psychological approach to close relationships focuses on the interaction between two individuals, paying attention to both behavior and what enters people's minds (emotions and cognitions).

In social psychology, until the end of the '70s, the research of relationships focused on interpersonal attraction, more precisely the aim was to identify the factors that determine people to be attracted to each other in the initial stages of relationship development.

In the 1980s, researchers focused on studying the much greater complexity of the phases of development, maintenance and dissolution of romantic relationships.

Close relationships are of great importance to people because they are essential for meaningful existence. In contemporary society, individualism and loneliness increase, leading to a longing for social connection and close relationships (Gosling, S., 2017).

While sociologists and psychologists believe that a close relationship improves an individual's health and happiness, the biological bases that influence these effects on health have been obscure. Learning how close relationships offer health protection benefits has been accentuated with new discoveries that show the significant benefits of being part of a relationship, which can prevent many health problems, from common diseases, diseases during pregnancy, birth defects, up to cancer and chronic diseases (Nauert, R., 2018).

Relationships provide a fundamental context for human behavior and development, and as such, the study of close relationships has become a major topic in social psychology in recent years. This field produces rich and diverse research, the results of which can be used in order to better understand human behavior. The psychology of close relationships emphasizes original empirical investigations, as well as conceptual works that lay the foundations of the science of close relationships.

Research objectives

O.1: The analysis of the stability-instability emotional connection with the marital adaptation.

O.2: Analysis of the correlation between the level of autonomy of the subjects and the social factors involved in choosing the partner.

Research hypotheses

Hypothesis 1: It is assumed that people with high levels of emotional stability have a higher level of marital adaptation.

Hypothesis 2: It is assumed that people interested in the social life of the partner have a higher level of marital adjustment.

Hypothesis 3: It is assumed that the people interested in the financial status of the partner are people with a high level of autonomy.

Sample description

In forming the sample we used a random sampling technique.

The sample includes 78 people aged between 19 and 66 years, 27 males and 51 females..

Research tools

Grid interview

I created this grid after deciding on the theme title. I chose the most important social factors involved, from my point of view, in choosing and even continuing a relationship with a partner.

The grid contains 18 directly listed items. 16 are rated on the 5-step Likert scale, where 1 means "unimportant", 2 "unimportant", 3 "important medium", 4 "important", 5 "very important". 1 item presents 3 answer options: 1 "yes", 2 "no", 3 "I don't know. The last item has 5 answer options. I will present each item separately.

F.F.P.I. Questionnaire

Five-Factor Personality Inventory (FFPI questionnaire) evaluates the five factors in the Big Five model: Extraversion (E), Kindness (A), Conscientiousness (C),

Emotional Stability (S) and Autonomy (D).

The questionnaire consists of 100 items, each in the form of a short and concrete sentence. They are grouped into five scales. Each scale consists of 20 items and is named after one of the surfaces. The subject must appreciate to what extent the statement fits him and answer with one of the variants: "1 = it suits him very little", "2 = it suits him a little", "3 = it suits him about half", "4 = it suits him well" and "5 = it suits him very well".

LWMAT Questionnaire

LWMAT Questionnaire – Locke-Wallance Marital Adjustment Test – measures marital adjustment. Its authors are Harvey J. Locke and Karl M. Wallace.

This 15-item instrument was one of the first to measure marital adjustment. Marital adjustment is defined as the accommodation of the partners with each other in any circumstances. The first item is a general index of marital happiness and is given a higher value when scoring. Scores of 100 or less are considered cutting scores, indicating poor adjustment to marital relationship.

Research results

Hyphotesis 1. It is assumed that people with high levels of emotional stability have a higher level of marital adaptation.

The variable emotional stability was tested using the F.F.P.I. questionnaire, and marital adjustment was tested using the LWMAT questionnaire..

Table 1. Normality test emotional stability

	Tests of Normality					
	Kolmogorov Smirnov			Shapiro-Wilk		
	Statistic	df	Sig	Statistic	df	Sig
stabilitate.emotionala	,099	78	,055	,965	78	,031

Lilliefors Significance Correction

In Table 1., the Kolmogorov-Smirnov calculation shows the significance threshold of 0.055, greater than 0.05, which means that the emotional stability variable has a normal distribution.

Tabelul 2. Test of normality marital adjustment

	Tests of Normality					
	Kolmogorov Smirnov			Shapiro-Wilk		
	Statistic	df	Sig	Statistic	df	Sig
lwmat	,092	78	,164	,959	78	,013

Lilliefors Significance Correction

In Table 2., the Kolmogorov-Smirnov calculation shows the significance threshold of 0.164, greater than 0.05, which means that the marital adjustment variable has a normal distribution..

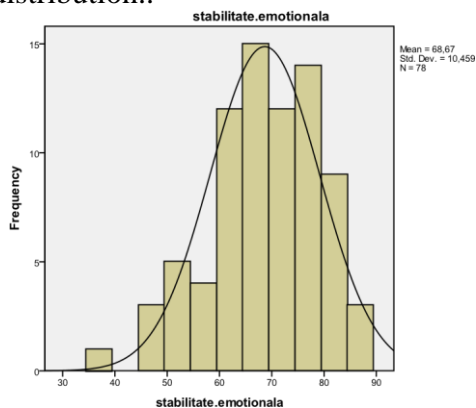


Fig.1. Emotional stability histogram

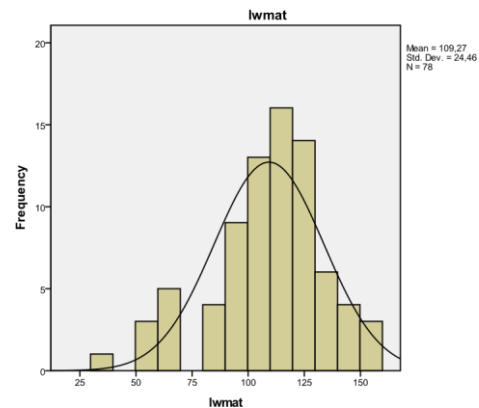


Fig.2. Marital adjustment histogram

Table 3. Emotional stability Indices

N	Valid	78
	Missing	0
Mean		68,67
Median		69,00
Mode		64
Std. Deviation		10,459
Variance		109,394

Considering the starting indices of the emotional stability variable highlighted in table 3, we have the average of 68.67, the median of 69.00, and the mode of 64. We can also observe the standard deviation of 10,459 and the variance of 109,394.

Tabel 4. Marital adjustment Indices

N	Valid	78
	Missing	0
Mean		109,27
Median		112,00
Mode		114
Std. Deviation		24,460
Variance		598,303

The starting statistical indices of the marital adjustment variable highlight the average of 109.27, the median of 112.00 and the mode of 114. Also, the standard deviation of 24,460 and the variance of 598,303 can be observed.

Since the two variables have normal distributions, we will apply the Pearson correlation to see if there is a correlation between the emotional stability variable and marital adjustment.

Tabelul 5. Pearson correlation coefficient
Correlations

		stabilitate. emotionala	lwmat
stabilitate.emotionala	Pearson Correlation	1	*
	Sig. (2-tailed)		,019
	N	78	78
lwmat	Pearson Correlation	*	1
	Sig. (2-tailed)	,019	
	N	78	78

Correlation is significant at the 0.05 level (2-tailed).

The table above indicates that emotional stability correlates with marital adjustment because the value of the significance threshold is 0.019, so less than the significant value of 0.05..

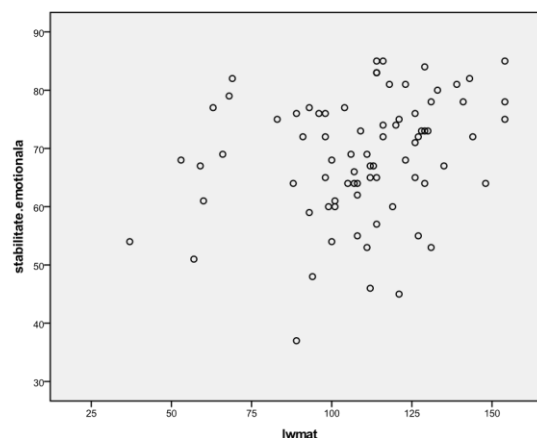


Fig.3. Cloud point correlation emotional stability - marital adjustment

In the figure shown above, it is shown that there is a positive correlation between emotional stability and marital adjustment.

The hypothesis that there is a positive correlation between emotional stability and marital adjustment is confirmed.

I believe that the people who adapt most easily in any circumstance, in this case and in the relationship, are emotionally stable people who know how to manage their emotions and react in a balanced way to changes that occur with the acceptance of a partner and family formation. Emotionally stable people hold the standard of happiness and achieve marital happiness through their ability to adapt.

One of the priority qualities of emotionally stable people that facilitates adaptation in the couple is the reaction. They react appropriately to unpleasant situations that may arise between partners and recover quickly. This is very important in marriage because it ensures adaptation and then maintaining a satisfying relationship.

Marital adaptation requires effort on the part of both partners because changes occur, new habits and routines must be created, a redistribution of activities and priorities is necessary. This becomes easy for balanced people who react appropriately in most situations. Thus, the marital relationship is not an exception for emotionally stable people.

Emotional stability is one of the most important qualities of the human being that makes his life easier and more beautiful. This is also where the couple's relationship is targeted, which becomes a manifestation of the beauty of life. Marital accommodation is seen and lived as a pleasant and necessary experience by emotionally stable people who feel the need for new experiences to validate their existence.

Both women and men who have a high level of this personality trait, emotional stability, do not succumb to the emotions that may occur during the construction of the couple, think constructively, act balanced and develop a healthy relationship. Marital adaptation involves accepting all the changes that occur, creating beneficial links between partners who satisfy and support the relationship. The inner balance of the individual provides security for the other and peace.

The harmonious physical energy of the people, the psychic power and the firm and optimistic attitude allow them a good reporting on the changes they assume, on the actions they undertake. And forming a couple is a decision that each of us makes at some point, but not all of us manage to cope. I believe that emotionally stable people know what they want, they are aware of the choices they make, which allows them a much easier acceptance of change and good accommodation..

Emotionally stable people adapt more easily to the marital relationship because they are flexible people who accept the change and natural evolution of things. Thus, marriage is viewed with openness, availability and involvement that facilitates good accommodation, fulfillment and satisfaction. Also, emotionally stable people not only improve their lives, but also improve the lives of others through their attitude and behavior. This reveals to them their ability to change in relation to changes in living conditions.

We can say that emotionally stable people bring quality to the couple and represent the support and openness necessary for acceptance into a new stage of life, family life.

Hypothesis 2. It is assumed that people interested in the social life of the partner have a higher level of marital adjustment.

The interview grid was used for the variable "Partner's social life" and the marital adjustment variable was measured using the LWMAT questionnaire.

Table 6. Test of Normality "Partner social life"

	Kolmogorov Smirnov			Shapiro-Wilk		
	Statistic	df	Sig	Statistic	df	Sig
Viata sociala a partenerului	,282	78	,000	,861	78	,000

Lilliefors Significance Correction

According to the table above, the Kolmogorov-Smirnov calculation indicates a significance threshold of 0.000, lower than the significant threshold of 0.05, which means that the variable does not have a normal distribution..

Table 7. Test of normality Marital Adjustment

	Kolmogorov Smirnov			Shapiro-Wilk		
	Statistic	df	Sig	Statistic	df	Sig
lwmat	,092	78	,164	,959	78	,013

Lilliefors Significance Correction

Table 7 shows the Kolmogorov-Smirnov calculation with a significance threshold value of 0.164, greater than 0.05, which indicates that the marital adjustment variable has a normal distribution..

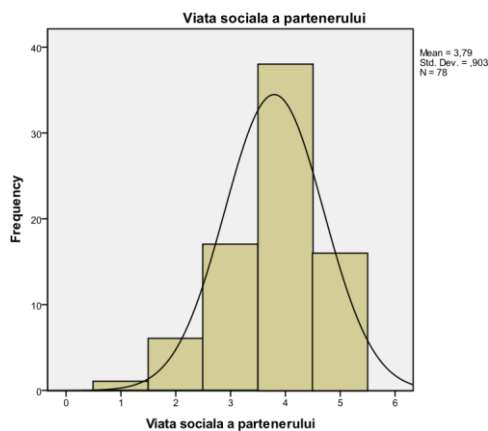


Fig.4.. „Partner social life” Histogram

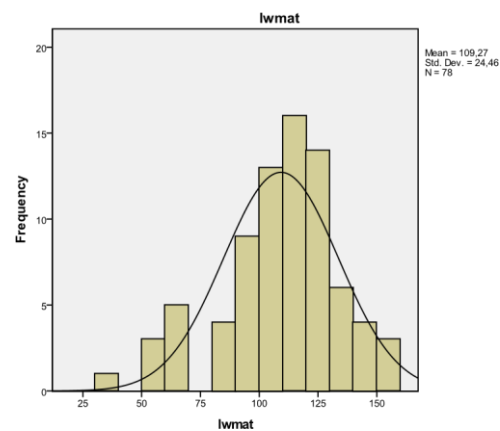


Fig.5.Marital Adjustment histogram

Table 8. „Partner social life” indices

N	Valid	78
	Missing	0
Mean		3,79
Median		4,00
Mode		4
Std. Deviation		,903
Variance		,815

According to table 8., the variable “Social life of the partner” presents the following starting indices: average of 3.79, median of 4.00, mode of 4, standard deviation of 0.903, and variance of 0.815.

Tabel 9. Marital adjustment indices

N	Valid	78
	Missing	0
Mean		109,27
Median		112,00
Mode		114
Std. Deviation		24,460
Variance		598,303

The table above shows the starting indices of the marital adjustment variable. Thus, the average is 109.27, the median is 112.00, and the mode is 114. The standard deviation is 24,460, and the variance is 598,303.

Given that one of the variables does not have a normal distribution, we will apply the non-parametric Spearman method to see if there is a correlation between the two variables.

Table 10. Spearman correlation coefficient

Correlations			Viata sociala a partenerului	lwmat
Spearman's rho	Viata sociala a partenerului	Correlation Coefficient	1,000	.
		Sig. (2-tailed)	.	,037
		N	78	78
lwmat	lwmat	Correlation Coefficient	.	1,000
		Sig. (2-tailed)	,037	.
		N	78	78

Correlation is significant at the 0.05 level (2-tailed).

Table 10. indicates that the two variables correlate, because the value of the significance threshold is 0.037, so lower than the significant value of 0.05. This demonstrates that there is a positive correlation between the partner's interest in social life and the level of marital adjustment.

The hypothesis according to which the persons interested in the social life of the partner are better adapted to the marital relationship is confirmed.

People have a strong need to control the psychosocial environment in order to develop strategies and procedures to adapt to them. Specifically, people generally need information about others, and this is also true in the couple's relationship. Partners need to know information about the other in order to form an opinion, to confirm a belief, to satisfy a curiosity. All these aspects facilitate marital adaptation. That is why people who are interested in the social life of the partner adapt more easily to the relationship because the partner's environment is also a sphere of interest that once known and explored offers peace and acceptance.

Thus, the interest for the social life of the partner is a manifestation of the need for in-depth knowledge of the partner and a confirmation of compatibility. The social life of the partner involves his interests and passions, how to spend free time, job, friends, entourage, habits. Knowing these aspects, discovering their manifestation, the frequency with which they are practiced is a satisfied need, that of knowledge. And once you know something, it's easier to accept. That is why these people adapt more easily in the couple's relationship.

Also, the manifestation of this desire for knowledge is a need to confirm the fact that there are common activities between the two partners. Knowledge offers peace and fulfillment, and they facilitate the adaptation of the two in the relationship they build. Accommodation in a couple represents the acceptance of the other, the acceptance of the changes that have taken place. In order for this process to be carried out as easily as possible, information is needed on how the partner works in social life most of the time, more precisely..

Discovering your partner's principles and beliefs is a step towards bonding between the two. The way the partner expresses himself, supports his ideas and behaves according to his principles is particularly relevant for the other because it helps him to broaden his vision of the image created about the partner and to love him even more.

The principle is known that the more we see a thing, the more we like it. It is also valid in the couple's relationship, in this case where exposure to the partner's lifestyle leads to acceptance. And this acceptance obviously facilitates marital adjustment.

The need to control the psychosocial environment that each individual has requires to be satisfied permanently, in any circumstance or context. In the process of satisfying this need, the individual develops strategies and procedures for adaptation. This process is equivalent to a deeper knowledge of the couple's partner, and the interest in his social life is the manifestation of this need common to all. Thus, finding out as much information as possible about the partner's way of life, the individual creates adaptation strategies in connection with them, later developing procedures to adapt to the marital relationship. Everything is phased, gradually, allowing the partner to accommodate.

Novelty is associated with insecurity and conflict, conditions that generate negative effects. That is why people interested in the social life of the partner, eager to know a large amount of information about the partner end up living positive emotional states, mental and emotional comfort that allows them a good adaptation in the relationship.

Hypothesis 3. It is assumed that the people interested in the financial status of the partner are people with a high level of autonomy.

The variable "Partner financial status" was tested with the help of an item from its own interview grid, and the Autonomy was tested with the help of the F.F.P.I questionnaire.

Table 11. Test of normality „Partner financial status”

	a			Shapiro-Wilk		
	Statistic	df	Sig	Statistic	df	Sig
Situatia financiara a partenerului	,206	78	,000	,900	78	,000

Lilliefors Significance Correction

The Kolmogorov-Smirnov calculation indicates a significance threshold of 0.000, so lower than the significant threshold of 0.05, meaning that the variable does not have a normal distribution.

Table 12. Test of normality Autonomy

	a			Shapiro-Wilk		
	Statistic	df	Sig.	Statistic	df	Sig.
autonomie	,068	78	*	,990	78	,780

This is a lower bound of the true significance.

Lilliefors Significance Correction

Table 12. shows the value of 0.200 in the Kolmogorov-Smirnov calculation, which means that the autonomy variable has a normal distribution because the value is higher than the significant threshold of 0.05.

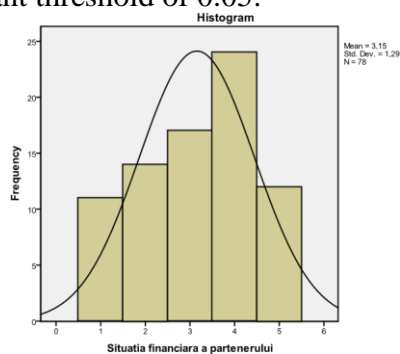


Fig. 7. „Partner financial status” Histogram

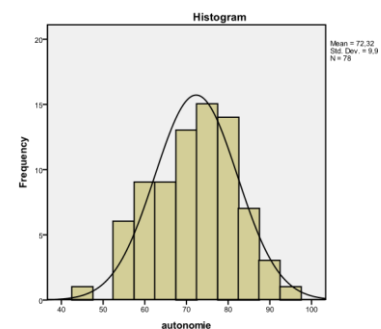


Fig.8. Autonomy Histogram

Table 13. „Partner financial status” indices

N	Valid	78
	Missing	0
Mean		3,15
Median		3,00
Mode		4
Std. Deviation		1,290
Variance		1,664

The table above shows the starting indices of the variable "Partner's financial status". We can see the average of 3.15, the median of 3.00, and the mode of 4. The standard deviation is 1,290, and the variance is 1,664.

Table 14. Autonomy Indices

N	Valid	78
	Missing	0
Mean		72,32
Median		73,50
Mode		a
Std. Deviation		9,900
Variance		98,013

Multiple modes
exist. The smallest
value is shown

Table 14 shows the starting indices for the Autonomy variable. The average is 72.32 and the median is 73.50. the mode does not have a specified value because there are multiple response variants. The standard deviation is 9,900, and the variance is 98,013.

Given that one of the variables does not have a normal distribution, to check the correlation between these two variables we will use the nonparametric correlation coefficient Spearman.

Table 15. Spearman correlation coefficient

Correlations			Situatia financiara a partenerului	autonomie
Spearman's rho	Situatia financiara a partenerului	Correlation Coefficient	1,000	
		Sig. (2-tailed)	.	,024
		N	78	78
	autonomie	Correlation Coefficient	*	1,000
		Sig. (2-tailed)	,024	.
		N	78	78

Correlation is significant at the 0.05 level (2-tailed).

Table 15. shows a correlation coefficient of 0.024, lower than the significant threshold of 0.05, which indicates that there is a positive correlation between the two variables, "Partner's financial status" and autonomy.

The hypothesis that people interested in the financial status of the partner have a high level of autonomy has been confirmed. Thus, we can say that a person who has a satisfactory financial situation for himself is a determined, ambitious and hardworking person.

This denotes a high degree of personal independence. A person who has these qualities is normal to want his partner to look like them.

People who have a high personal autonomy, implicitly also have a financial autonomy. Everyone's personal independence is manifested in several areas, and financial independence is also included. That is why people interested in the financial situation have a high autonomy. Specifically, they are also independent in many ways and consider it normal to interact with people who are on the same level as them.

A high level of autonomy includes a certain degree of independence, but also freedom of action or development. These aspects are desired by most people in the relationship from their partner. These people respect each other and demand respect, involvement from the other. Since the love affair is the basis of all one's decisions and actions throughout one's life, I believe that it is especially important for him to grow with a similar person in as many ways as possible, even that of personal and financial independence.

I believe that the partner's financial situation is proof of his independence, while revealing his ability to reason and act independently. Of course, if a person with a high level of autonomy meets a potential partner who is not able to manage on his own financially, this is interpreted as evidence of a lack of interest in development. And as a person with a high level of autonomy provides stability from this point of view, it is normal to want the same thing from the other.

Also, a good financial status of the partner indicates the desire to enrich and improve knowledge, the desire to inform him. All these qualities are already held by the person with a high level of autonomy. Such a person wants from his partner what he already has and can offer in the relationship. And here we refer to self-confidence and the possibility of development.

The interest for the financial status of the partner comes from experiencing the stages towards personal and financial development. A good financial situation reveals the partner's

involvement in what he does, his desire for action, his motivation and will and even his ability to work. People interested in the financial aspect are people who know how to achieve financial independence, that work and involvement are needed, and they want a financially stable person because the effort in this direction is known to them, they possessing this quality.

People interested in the financial status of the partner are people with a high level of personal autonomy because the manifestation of interest in this area denotes the knowledge of one's own sacrifice to achieve certain goals in life.

Conclusions

This paper followed the psychological and social dimensions involved in choosing the couple's partner. Because this is of major interest to each of us, who at least once faced a decision in this sense, I wanted to highlight the correlations that may exist between unique personality factors and between certain social factors, which, from my point of view, are significant and common to most of us.

From the testing of the hypotheses proposed by the study, the following conclusions emerge:

Hypothesis 1 according to which people with a high level of emotional stability also have a higher level of marital adjustment has been confirmed. Thus, an emotionally stable person is a safe, balanced person who is unaffected by insignificant events, and this also allows him to adapt more easily to the marital relationship, to accept a partner and the changes that may occur with this without disturbing his emotional balance and, it can be said, without regretting the choice made.

Hypothesis 2 according to which people interested in the social life of the partner have a higher level of marital adjustment was confirmed. I believe that social life involves a lot of aspects that define the personality and lifestyle of an individual and that can help develop the relationship or destroy it. This depends, in my view, on the preferences of the partner or the acceptance that can be offered by him to the other. In this way, the knowledge and / or involvement of the other in the social life of the partner facilitates the marital adaptation of the two spouses.

Hypothesis 3 according to which the persons interested in the financial status of the partner are persons with a high level of autonomy was confirmed. I believe that today, both women and men are interested in the financial status of the partner and this derives from a high level of personal autonomy because, in turn, they are people who can offer the same things they expect to receive.

According to research, a high level of emotional stability, but also the belief in the existence of the ideal partner and the interest in the social life of the partner are factors that facilitate marital adjustment. On the other hand, those who have a negative perspective on the marital relationship prefer alternatives to marriage, and people interested in the physical appearance of the partner are also interested in sexual relations. Another aspect observed is that people with a high level of autonomy are interested in the financial status of the partner.

References

- [1] Byrne, D., London, O., Reeve, K., 2015, The effects of physical attractiveness, sex, and attitude similarity on interpersonal attraction, „Journal of Personality”, <https://onlinelibrary.wiley.com/doi/abs/10.1111/j.1467-6494.1968.tb01473.x>
- [2] Byrne, D., Griffitt, W., 2017, Interpersonal Attraction, „Annual Review of Psychology”, <https://www.annualreviews.org/doi/10.1146/annurev.ps.24.020173.0015>

- [3] Campbell, L., Jeffrey, A., Simpson, D., A., Garth J., Fletcher, O., 2016, „Ideal Standards, the Self, and Flexibility of Ideals in Close Relationships”, <http://citeseerx.ist.psu.edu/viewdoc/download?doi=10.1.1.895.9430&rep=rep1&type=pdf>
- [4] Crăciun, D., 2004, Social psychology, A.S.E. Publishing House, Bucharest
- [5] Cunningham, M.,R., Shamblen, S., R., Ault, L., K., 2005, Social allergies in romantic relationships: Behavioral repetition, emotional sensitization, and dissatisfaction in dating couples, Siteul oficial al Bibliotecii online din Wiley, S.U.A., <https://onlinelibrary.wiley.com/doi/abs/10.1111/j.1350-4126.2005.00115.x>
- [6] Fletcher, G., J.,O., Simpson, A., 2000, Ideal Standards in Close Relationships: Their Structure and Functions, „Academia Magazine”, https://www.academia.edu/21636465/Ideal_Standards_in_Close_Relationships_Their_Structure_and_Functions
- [7] Gossling, S., 2017, Community, Friends, Family, „Science Direct Magazine”, <https://www.sciencedirect.com/topics/psychology/close-relationships>
- [8] Higgins, E., T., 1989, Self-Discrepancy Theory: What Patterns of Self-Beliefs Cause People to Suffer?, „Science Direct Magazine”,
- [9] <https://www.sciencedirect.com/science/article/pii/S0065260108603068>
- [10] Higgins, E., T., 1989, „Self-Discrepancy: A Theory Relating Self and Affect”, <http://persweb.wabash.edu/facstaff/hortonr/articles%20for%20class/Higgins.pdf>
- [11] Jamieson, D., W., Lydon, J., E., Zanna, M., P., 2016. Attitude and activity preference similarity: Differential bases of interpersonal attraction for low and high selfmonitors., Siteul Oficial al Asociației psihologilor americani, <https://psycnet.apa.org/doiLanding?doi=10.1037%2F0022-3514.53.6.1052>
- [12] Levitchi, C., 2011. About illusions, myths, deceptions, Ascendent Publishing House, Bucharest
- [13] Morry, M., M., 2007. The attraction-similarity hypothesis among cross-sex friends: Relationship satisfaction, perceived similarities, and self-serving perceptions, „Journal of Social and Personal Relationships”, <https://journals.sagepub.com/doi/10.1177/0265407507072615>
- [14] Nauert, R., 2018. Close Relationships Influence Health, Happiness, „PsyCentral Journal”, <https://psychcentral.com/news/2012/08/03/close-relationships-influence-healthhappiness/42635.html>
- [15] Robins, G., Boldero, J., 2003. Relational Discrepancy Theory: The Implications of Self-Discrepancy Theory for Dyadic Relationships and for the Emergence of Social Structure,
- [16] „Sage Pub Journal”, https://journals.sagepub.com/doi/10.1207/S15327957PSPR0701_4
- [17] Scott, S., J., Davenport, B., 2018. Mindful Relationship Habits: 25 Practices for Couples to Enhance Intimacy, Nurture Closeness, and Grow a Deeper Connection, CreateSpace Independent Publishing Platform
- [18] Singh, R., 2010, Attitudes and attraction: A new test of the attraction, repulsion and similarity-dissimilarity asymmetry hypotheses, „British Journal of Social Psychology”, <https://onlinelibrary.wiley.com/doi/abs/10.1348/014466600164426>
- [19] Sprecher, S., Wenzel, A., Harvey, J., H., 2018, The Role of Ideal Standards in Relationship Initiation Processes, „Semantic Scholar Journal”, <https://www.semanticscholar.org/paper/The-Role-of-Ideal-Standards-in->

RelationshipSprecher-Wenzel/05d2bf8d85498b748a4db9dda53603e5ae1fe41c#paper-header

- [20] Stichweh, R., 2015, Social Dimension, „Science Direct Journal”, <https://www.sciencedirect.com/topics/computer-science/social-dimension>
- [21] Vendemia, J., M., C., 2012, Partner Discrepancies in Distressed Marriages, „Research Gate Magazine”, https://www.researchgate.net/publication/236040644_Partner_Discrepancies_in_Distressed_Marriages
- [22] Zuckerman, M., Miyake, K., Hodgins, H., S., 1991, Cross-channel effects of vocal and physical attractiveness and their implications for interpersonal perception, „Journal of Personality and Social Psychology”, <https://psycnet.apa.org/record/1991-18347-001>