



TECHNIUM
SOCIAL SCIENCES JOURNAL

Vol. 32, 2022

**A new decade
for social changes**

www.techniumscience.com

ISSN 2668-7798



9 772668 779000

Unhappy Return to Homeland. A Study on the Reasons why Returned Albanian Migrants re-abandon their Country

Myslym Osmani¹, Mira Andoni²

¹Faculty of Economy and Agribusiness, Agricultural University of Tirana, Kodër Kamëz, Tirana 1000, Albania, ²Faculty of Agriculture, Department of Agribusiness “Fan Noli” University, Korça, Albania

mosmani@ubt.edu.al, miraandoni@yahoo.com

Abstract. This is a study on the tendency and factors of re-leaving of Albanian migrants returned from migration. The study uses data collected through a special survey by INSTAT for 1878 individuals, where the population of interest was that of returned migrants. To conduct the study, the literature desk study, descriptive statistical method, and exponential binomial modeling method are used. The study highlights as the main factors of re-migration of returned migrants the lack of prospects for development of the country, poor economic living conditions, unemployment or few employment opportunities, which result in insufficient income for migrant families. Since some migrants have plans to invest after returning home, other important reasons evidenced by the study are the lack of tax and customs facilities as well as the lack of access to credit. Poor health services and public services in general and poor political stability are other reasons for migration. Persons who are unemployed, as well as persons who were self-employed in the last country of migration, have a stronger tendency for re-migration. The study also highlights the lack of effective policies in support of migrants upon their return and emphasizes the need to involve migrants in drafting the government's political development agendas, which would ensure both faster economic development of the country and more adequate and effective addressing of migration issues.

Keywords. migrant, migration, returned migrant, re-emigration, factor of migration, statistical model

1.Introduction

The Albanian transition to democracy after the fall of communism can also be shown as a history of migration, both internal and external, because one of the most obvious features of the Albanian transition has been, without a doubt, migration. The 30-year period of this transition testifies to strong waves of migration from rural to urban areas of the country but also from Albania to other countries, mainly to European countries and the USA, but not only. According to IOM (2019), in 2019 Albania was part of the top 20 countries in the world in terms of the percentage of the population in-migration about 30%. In these 20 countries from our region are Bosnia and Herzegovina with about 33% and Northern Macedonia with roughly 24%.

Migration has been seen by poor Albanians as a quick and effective solution to alleviating poverty and improving their livelihoods.

Throughout the transition, migration has been a continuous phenomenon, a migration with biblical dimensions and forms at the beginning of the transition, with ups and downs, however, with significant dimensions in the recent period as well. Statistics say that in the years 1991-2001 emigrated about 600 thousand people while in the period 2001-2011 emigrated about 481 thousand others, with a total, until 2015, of about 1.4 million migrants (IOM, 2016). According to the Ministry of Interior (2015), in 2011 there were about 1.4-1.5 million migrants, a figure that is 33 percent of the population. According to WB (2011) estimates, Albania is among the 20 countries with the highest migration in the world, with about 47 percent of the population, comparable to Barbados and Tonga.

It seems that over time the tendencies for migration not only did not decline but began to intensify. In 2014-2016 there was a new wave of migration in an attempt to escape poverty. As highlighted by a GALLUP study, in the period 2013-2016 about 56% of Albanians wanted to migrate, compared to 36% who wanted to in the period 2010-2012 (Domachowska, 2019). These were the highest figures in the region, including Moldova, Northern Macedonia, and Kosovo.

The number of migrants continued to be huge even later. According to the Ministry of Interior (2019), in 2017 Albania had 1.5 million international migrants and Albania continues to be among the countries with the highest migration in the world. Currently, about 37% of the Albanian population is in migration, while Bosnia and Syria have about 33% and Northern Macedonia about 24% (Exit News, 2020). According to IOM (2020) in the period 2011-2019 about 22.1% of Albanian families had at least one member in migration, of which about 30% have completely emigrated families while the difference of 70% had at least one member in migration. According to the same source, from 2011 to 2019, about 361 thousand people emigrated, of which about 183 thousand people emigrated together with their families.

A special problem that has been remaining and is becoming more serious is the migration of young people. According to a 2020 survey of students conducted by CESS (Center for Economic and Social Studies) it turns out that about 79% of Albanian students want to leave the country, a figure that in 2018 was only 65%. Moreover, about 95% of students studying abroad do not want to return again to Albania (Informix al, 2020).

The migration of academic staff and researchers (the so-called "brain drain") has been another feature of Albanian migration. In the period 2001 to 2008, about 40% of the academic and research staff emigrated (Gedeshi and Jorgoni, 2012).

It is estimated that migration, through remittances, has been and continues to be one of the most important sources that have not only nurtured Albanian families but also supported the economy with investments, technology, know-how, and experience for its development. Remittances in 2003 amounted to 710.8 million, in 2015 amounted to 597 million EUR, in 2017 they amounted to 637.3 million, at 951.7 million in 2007, 965 million in 2013, and 1237 million or 9% of GDP in 2018 (IOM, 2016; MIA, 2019; Bank of Albania, 2019). By their amount, remittances have been behind both exports and foreign investments (Bank of Albania, 2019).

In addition to migration, during the 30-year period, the opposite phenomenon has occurred that of the return from other countries and the integration into Albanian life and economy of a considerable number of migrants. In the period 2008-2014 alone, as data sources say, 150 to 180 thousand migrants returned to Albania (Barjaba and Barjaba, 2015). According to IOM (2020) at least since 2011, about 97 thousand migrants have returned, while only after 2018 (until July 15, 2019) returned 21758 migrants. According to INSTAT-IOM (2014), the

period 2001-2011 returned about 139827 Albanian migrants, while the period 2009-2013 returned 133544 migrants over 18 years of age, of which 98.414 males and 35.130 females. According to the Ministry of Interior (2019) in 2016, 21681 persons returned while in 2017 20632 persons returned the vast majority of who were men. As evidenced by the European Training Foundation (ETF) in a study carried out in 2007 with about 1000 returned migrants, among the main reasons for return are forced return by host country authorities, non-integration into the labor market, nostalgia or family reasons, and intention to invest in the homeland. However, the last group was small (only 8% of the returnees) (IOM Albania, 2016).

It is estimated that this category of migrants has played a special role in the economic development of the country through their projects or investments in the economy, including the agricultural sector. Returned migrants have brought with them not only investment capital, but also important experiences, methods, technology and know-how, and new mentalities towards work, property, politics, the role of the state, and generally the freedom and commitment of the individual in society. Thus, they have contributed significantly to not only the economic development of the country but also to the transformation and emancipation of Albanian society.

Finally, in addition to migration abroad, there is the phenomenon of re-migration of a part of repatriated migrants, if we can say return to migration, thus joining the wave of young migrants who do not feel happy, do not find opportunities, or are not satisfied with the alternatives or opportunities of employment, living, education, security offered by the mother country, or do not see opportunities to fulfill the vision they have for their lives or that of their children and families.

Of course, there are specific reasons and causes for this phenomenon. Economic causes may be important in the meantime, but they are not the only ones. Perhaps the Albanian environment fails to provide effective opportunities and support for them and their families, a lack which can be multidimensional.

According to the investigations we have conducted, the literature has not been able to adequately address their reasons, causes, absences, strength, or seriousness, specifically for the category of returned migrants, which have influenced the non-fulfillment of the expectations of returned migrants, forcing Albanians to regain migration routes. Generally, this category is treated as a part of the whole migrant population without delving sufficiently into the specific causes of remigration, focusing only on general reasons. This constitutes also our research problem in this paper and at the same time determines the objective of our study.

Research in this area could not only facilitate identifying the causes or reasons for re-leaving but also assess their relevance and contribute to a more complete and realistic investigation of the problem and to the most effective treatment of the problem of migration and, perhaps, in slowing down or overturning his tendencies.

2. Review of literature

The topic of migration, even for Albania, is one of the most debated and hottest topics in literature. It focuses mostly on nature, causes or factors, trends, and intensity, but also on policies and the role of government as well as their effectiveness. It provides a fairly good general knowledge of these issues.

According to IOM (2020), referring to the United Nations an (international) migrant is any person who has changed residence for at least 3 months but not more than one year (short-term migrant) or at at least one year (long-term migrant).

The literature emphasizes that migration is a global phenomenon, which moreover has not affected or affects only poor countries. The causes of migration are economic, political, cultural, health, social, environmental, etc. However, living conditions are primary factors of migration, but public services, transport, and a better environment in the destination countries also have continuously played a significant role (Thet, 2014).

Besides, the literature has highlighted that the presence of migrant networks and income differences between countries, and various demographic factors play a key role in promoting migration (Simpson, 2017).

The literature on migration (Simpson, 2017; Barjaba and Barjaba, 2015; MIA, 2015) classifies its factors into two groups: i-push factors and ii-pull factors. The motivating factors relate to the country of origin and act on it. The pull factors have to do with the destination countries of the migrants. Both groups of factors can be economic or non-economic in their nature.

Among the main driving factors of economic nature, the literature includes poverty, low wages, high unemployment, high cost of living, property insecurity, etc. Among the driving factors of non-economic nature, the literature includes the at-risk rights of the individual, poor health and education systems, corruption, crime, social insecurity, social networks, etc.

Among the main pull factors of economic nature, the literature includes the demand for high wages, strong economic growth, developed technologies, property rights, low cost of living, etc. While in the category of pull factors of economic nature is included the freedom of the individual, good health and education system, etc. According to Oğuzhan Okumuş (2020), who has studied the attractive factors in the case of migration of skilled labor to Germany, the main attractive factors are the economic ones, while in the case of student migration the attractive social and cultural factors play a major role.

The literature offers classifications of migration factors from other perspectives as well. According to Castelli (2018), these factors can be divided into three groups: i-macro factors (political, social, economic, demographic, and environmental); ii-micro factors (age, gender, education, religion, language, family or individual wealth, etc.); iii-meso factors, which can be either facilitating or hindering (political, legal, social, technological, cost of moving, etc.).

In the case of Albania, after the fall of communism, living was extremely difficult and this was the main driving factor for migration. At the beginning after the downturn of communism, poverty and unemployment were the two main factors of Albanian migration (Barjaba, 2004). De Sotto et al (2002) cite poor living conditions and lack of individual and political security as additional driving factors. Besides, at its beginnings, migration was also attracted by the democratic image of the west in the eyes of Albanians, where the saying “we want Albania like Europe” is more than significant. Even today migration is driven by poverty, unemployment, and poor living conditions, but in contrast to its beginnings now education has become one of the main pull factors for migration (Barjaba and Barjaba, 2015).

According to IOM (2016), for Albania, the main factors of migration have been and are high unemployment, low wages, poverty, low living standards but also education, personal freedom, professional career, insecurity, violence, etc. According to the Ministry of Interior (2019), referring to INSTAT, the main reasons for the migration of Albanians are five: employment opportunities, family reunification, unemployment in Albania, study abroad opportunities, and others.

The research (Gedeshi and King, 2018) shows that there is a relationship between the desire to emigrate on one hand and the economic development of a country and education, on the other hand (the so-called 'development-integration nexus').

Regarding the return of migrants to Albania, according to INSTAT-IOM (2014), some other reasons for return are job loss in the country of migration, longing for the country and family as well as problems with families left behind in Albania.

Improving economic conditions in the country and deteriorating environmental and political conditions in the country of migration serve as factors to reduce migration (Simpson, 2017)

Over years the Albanian state has had concrete commitments regarding migration. They are expressed through relevant strategies and action plans. The first government strategy was the National Migration Strategy 2005-2010. Another strategy was the Strategy for Return and Reintegration of Albanian Citizens 2010-2015, as well as the National Migration Strategy 2019-2022 accompanied by an Action Plan. A special Minister for Diaspora has also been appointed.

The main aspects of the last strategy are the improvement of migration governance through effective national programs and policies on the return and integration of migrants, enhancing the impact of migration to the benefit of migrants themselves and society, the collection, and analysis of data on migration, as well as the improvement of institutional coordination at the central and local levels for the implementation of migration-related policies. Key areas to ensure safe and orderly migration according to the strategy are (i) effective control of irregular movement across the border and within the territory of Albania (ii) management of migration flows (iii) effective entry and stay policies (iv) effective returns mechanisms and (v) efficient response to irregular migration of Albania citizens in EU (MPB, 2019).

As the literature points out (Barjaba and Barjaba, 2015) Albania has made efforts to align its migration and asylum policies with international standards. One aspect of these efforts has been linking migration to development policies by exploiting experiences gained abroad as well as encouraging the Albanian Diaspora to play a better role in the country economic development.

Important aspects of integration policy are also strategies and policies for the development of the country, which can be considered a key factor to reduce the migration of Albanians, policies to support legal migration channels, discourage informal channels, and support Albanian migrants abroad (Barjaba and Barjaba, 2015).

In the framework of integration-related policies, Albania has adopted several acts, such as the Migration Act of 1995, the Foreigners Act of 2013, and some government decisions in its implementation as a basis for managing the migration of foreigners, as well as the Asylum Act in 2014. In addition, Albania has signed a number of protocols with other countries related to the return and resettlement of migrants.

Despite this, the literature underlines that the legal and institutional framework for migration is still insufficient, both for migration and for the return and use of capital, capacities, and experiences of migrants for the development of their country.

The government has tried with its policies to promote the economic development of the country by encouraging the return of successful migrants and their investments in the country. The literature also highlights that the government has assisted in the reintegration of migrants, as was the case of migrants who were forced to return from the financial crisis in Greece. Progress has also been marked in acknowledgment of migrants' work years and patents in some countries, such as Greece and Italy.

On the other hand, according to the literature, government policies toward reducing migration are considered ineffective. Moreover, it is also estimated that the growing political agenda is not properly aligned with that of migrants (Barjaba and Barjaba, 2015).

Regarding the policies that focus on the problem of migration, the literature also highlights shortcomings, which we consider serious, in terms of their monitoring and evaluation. It points out that mechanisms for monitoring and evaluating government migration policies and strategies have been deficient (Gedeshi and Jorgoni, 2012).

International organizations and institutions have also played an important role in facilitating the return of migrants. The literature mentions IOM Albania, British Home Office (via VARRP-Voluntary Assisted Return and Reintegration Program), and the European Commission (Fostering Sustainable Reintegration in Albania, Kosovo, and FYROM by strengthening local NGO capacity for service provision to returnees), (Dragoti and Ismaili, 2018).

Based on the research problem and objective, as well as this literature review we formulate the following research questions:

- i- What are some of the factors that motivate returned migrants to re-emigrate?**
- ii-What are the main facilities/measures that encourage migrants to return and invest in Albania?**
- iii-Do the measures/policies taken by the government to date facilitate the return and stay of migrants?**
- iv-Do returnees have enough incentives to invest in their home country?**
- v- How strong is the tendency of remigration?**

3.Data and Method

3.1 Data

The data source is the 2013 Migration Reintegration and Returns Survey, conducted by the Institute of Statistics (INSTAT) in cooperation with the Office of the International Organization for Migration (IOM). This survey has been conducted in the period September-October 2013 and was based on personal interviews with 1878 people from 12 regions of Albania. As much as 72% of respondents were male and the rest 28% were female.

Figure 2 shows the structure of the survey sample by age. It is noticed that the sample is dominated by young or middle ages (18-47 years old) with almost 75% of the number of respondents. Older ages make up less than 10% of it.

3.2 Variables

The variables for which data were obtained and included in our study are shown in Table 1 below. Generally, these variables are expressed in a nominal measurement scale.

Figure 1: Structure of the sample by ages

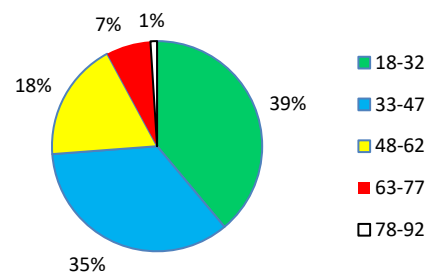


Table 1. Variables and their measurement scale

Code	Variables	Measurement scale	Variable categories
Y	Do you plan to leave again?	Binomial	1=Yes, 0=No
X1	Gender	Binomial	0=Female, 1=Male
X2	Actual employment status	Multinomial	1=With a wage, 2=Self-employed, 3=Unemployed, 4=Other
X3	Is insufficient capital a reason for not investing?	Binomial	1=Yes, 0=No
X4	Does supply of land stimulate the return to invest?	Binomial	1=Yes, 0=No
X5	Does facilitation of procedures stimulate the return to invest?	Binomial	1=Yes, 0=No
X6	Does technical assistance stimulate the return to invest?	Binomial	1=Yes, 0=No
X7	Does tax and duty facilitation stimulate the return to invest?	Binomial	1=Yes, 0=No
X8	Are you happy for being returned?	Binomial	1=Yes, 0=No
X9	Employment status in the last country of migration	Multinomial	1=With a wage, 2=Self-employed, 3=Unemployed, 4=Other
X10	Employment status before return to homeland	Multinomial	1=With a wage, 2=Self-employed, 3=Unemployed, 4=Other
X11	Economic situation in the last country	Ordinal	1=Very good, 2=Good, 3=No change, 4=Poor
X12	Employment status upon return	Multinomial	1=With a wage, 2=Self-employed, 3=Unemployed, 4=Other

3.3 Method

In the study, we used the method of desk-literature review, descriptive statistics method, and regression method.

Among the descriptive statistics we used statistical ratios and graphical presentation. For more information about descriptive statistics see (Osmani et al., 2021; Eliseeva and Yuzbashev; Witte and Witte, 2017).

Among other statistical methods we use logistic binomial modeling. The binomial logistic model has the following form:

$$P_1 = P(Y = 1) = \frac{\exp(\mathbf{AX})}{1 + \exp(\mathbf{AX})}$$

Where Y is the dummy dependent variable that can take only two values $Y = \text{Yes} = 1$, or $Y = \text{No} = 0$. X is a vector of independent variables that can be quantitative variables or nominal variables (binomial or multinomial) and β is a vector of parameters. Thus, the logistic model above shows the probability that the Y variable takes the value 1 for given values of the independent variables. The probability that the Y variable takes the value 0 is $P_0 = P(Y = 0) = 1 - P(Y = 1)$. The ratio P_1 / P_0 indicates the odds, or otherwise how many times the probability that an individual is at the level $Y = 1$ for given values of X in relation to the probability that this individual is in the 0th level of Y . $\text{Exp}(A)$ for one of the coefficients A indicates how many times the relative odds increase if the corresponding variable X is added by one unit. If $A > 0$ then $\text{Exp}(A)$ indicates an increase in real odds, if $A < 0$ it indicates a decrease in relative odds.

The logistic binomial model is evaluated by the maximum likelihood estimation (MLE) method. For more information on the logistic model see (Osmani, 2017; Gujarati, 2003; Wooldridge, 2016).

4. Analysis and Results

4.1 Descriptive analysis

Data analysis shows that a significant proportion of returned migrants (25%) have decided to re-emigrate, versus 21% not wishing to re-leave. The rest is unclear in its decisions regarding this issue.

The data show that among the reasons for migration a large proportion of about 55% say they will leave because they do not see a secure future in Albania, while over 60% say that the reason why they want to emigrate is that they cannot find a job in their country.

Figure 2 below shows that the vast majority of returned migrants, about 46% of respondents, are unemployed versus about 37% who are salaried or self-employed.

Figure 2. Tendency for re-leave

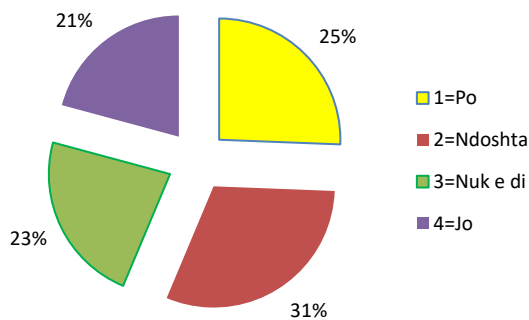


Figure 4. Opinion for the actual economic situation compared to that outside the country

Figure 3. Employment status at the moment of the survey

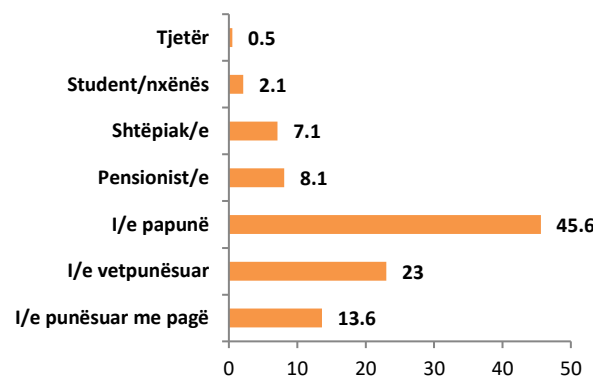


Figure 5. Opinion about measures to facilitate return

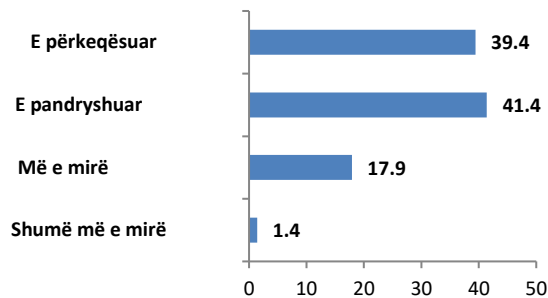


Figure 6. Main facilities needed to stimulate return of migrants and investment in Albania

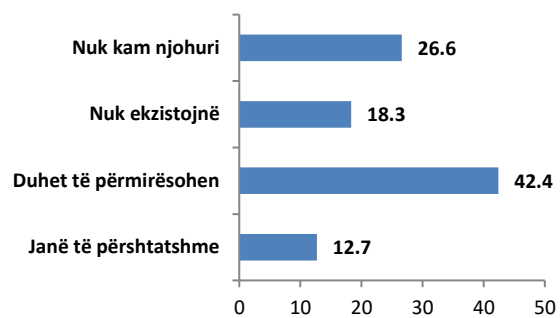
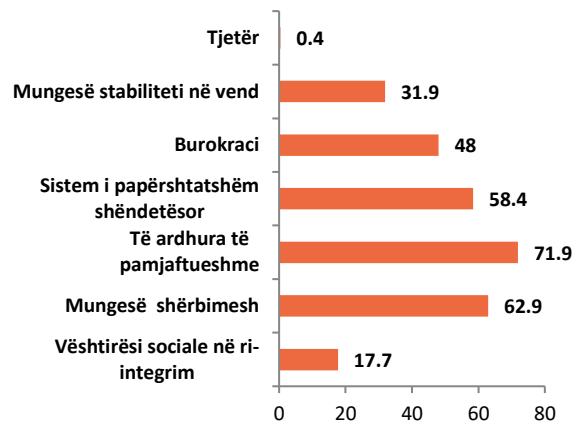
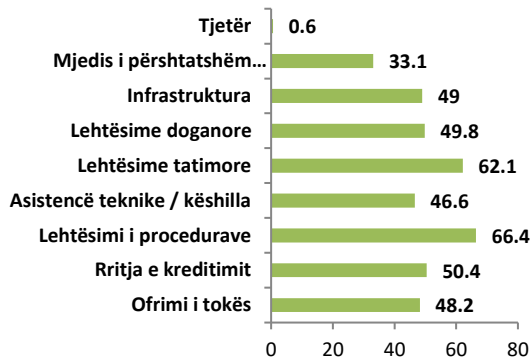


Figure 7. Main problems upon return to Albania



Source: Authors

The data collected show that out of about 36% of respondents who answered the question about the difficulties of finding a job in Albania, only about 12% of them had found a job before returning, while the rest had at least 3 months after returning to find a job. This part does not include migrants who were unemployed at the time of the interview.

Figure 4 shows the assessments that migrants make of their economic situation in Albania compared to the situation in the country where they emigrated. About 40% of them say that their situation has worsened versus only about 20% who say it is better or much better. A considerable part asserts that their economic situation compared to abroad in the country of migration has not changed.

Very worrying and significant are the facts that, as the migrants say, they have not found support from Albanian institutions in the case when they have had projects to invest in, while about 95% of returned migrants say they have not received any support, whether public or private, in Albania after their return from migration. Regarding the measures needed to facilitate the return of migrants to Albania, over 60% of them say that these measures either do not exist at all or need improvement and only almost 13% of them think that these measures are appropriate (Figure 5).

Figure 6 shows what could be some of the key measures that would facilitate or stimulate the return of migrants, while figure 8 shows the opinions of returned migrants regarding the main problems they have encountered, or are facing in Albania upon return.

4.2 The statistical model

Next, we evaluated a statistical binomial logistic model about the reasons for the return of Albanians in migration. This model is presented in Table 2 below.

Table 2. Logistic model, dependent variable Y=Do you plan to leave? (1=Yes, 0=No)

	Coefficient	Std. Error	z	p-value	EXP(B)	Sig.
const	-0.343	0.595	-	0.5649	0.710	
X1, 1=Male, 0=Female	0.705	0.275	2.567	0.0103	2.024	**
X3, Po=1, Jo=0	-1.150	0.297	-	0.0001	0.317	***
X4, Po=1, Jo=0	0.613	0.224	2.733	0.0063	1.846	***
X5, Po=1, Jo=0	-0.433	0.250	-	0.0829	0.648	*
X6, Po=1, Jo=0	0.340	0.243	1.401	0.1612	1.405	
X7, Po=1, Jo=0	0.383	0.256	1.499	0.1340	1.467	
X8, Po=1, Jo=0	-0.576	0.223	-	0.0097	0.562	***
DX2_2, 1=Self-employment, 0=Otherwise	0.985	0.556	1.772	0.0763	2.677	*
DX2_3, 1=Unemployed, 0=Other	1.868	0.418	4.464	<0.0001	6.476	***
DX2_4, 1=Other, 0= Other	1.647	0.827	1.991	0.0465	5.190	**
DX9_2, 1=Self-employment, 0=Other	2.075	0.841	2.466	0.0137	7.962	**
DX9_4, 1=Other, 0= Otherwise	-0.510	0.442	-	0.2493	0.601	
DX10_2, 1=Selfemployment,0=Otherwise	-0.362	1.146	-	0.7523	0.696	
DX10_3, 1=Unemployed, 0=Otherwise	0.360	0.237	1.518	0.1291	1.433	
DX10_4, 1=Other, 0=Otherwise	0.723	0.559	1.294	0.1958	2.060	
DX11_3, 1=No change, 0=Otherwise	-0.660	0.340	-	0.0520	0.517	*
DX11_4, 1=Bad, 0=Otherwise	-2.571	0.814	-	0.0016	0.076	***
DX12_2, 1=Selfemployment,0=Otherwise	-0.934	0.695	-	0.1792	0.393	
DX12_3, 1=Unemployed, 0=Otherwise	-0.661	0.529	-	0.2111	0.516	
DX12_4, 1=Other, 0=Otherwise	-1.018	0.916	-	0.2662	0.361	

Mean dependent variable	0.533755	S.D. dependent variable	0.499386
McFadden R-squared	0.160078	Adjusted R-squared	0.095950
Log-likelihood	-275.0500	Akaike criterion	592.1001
Schwarz criterion	679.4854	Hannan-Quinn	626.4675

Number of cases 'correctly predicted' = 331 (69.8%)
 F (beta'x) at mean of independent variables = 0.499
 Likelihood ratio test: Chi-square (20) = 104.841 [0.0000]

According to the estimated model, men are generally more likely to leave than women; men are twice as likely to leave as women. Those who feel happy after returning have lower tendencies to return; the chances of leaving those who feel happy are 56% lower than those of those who feel unhappy.

Those who qualify insufficient capital as a reason for not investing are less likely to leave; those who are against have about 32% lower chances of leaving than not leaving compared to levels who think otherwise.

Those who think that facilitating procedures to invest promotes returns are less likely to leave, they have a 56% lower chance of leaving than not leaving compared to those who think otherwise.

Those who think that facilitating the provision of land to invest promotes returns are less likely to leave. In terms of employment status, those who are unemployed, self-employed, or in the "other" status are more likely to leave; for example, those who are unemployed are about 6.5 times more likely to leave than other categories of persons.

Migrants who were self-employed in the last country of migration have a strong tendency to leave, about 8 times stronger than others and, finally, those who think that in their last country of migration the situation has been bad or invariably have less tendency to leave.

The other factors included in the model, although they may have some effect on the propensity of Albanian migrants returning for migration, are not significant.

5. Discussion

A considerable proportion of roughly 55-60% of Albanians is considering leaving the country because, as they say, they are hopeless about having a future in their country, or because there are no job opportunities. Returned migrants overwhelmingly estimate (about 80%) that the economic situation in the country has deteriorated or has not changed. Therefore the bad economic situation, which has an impact on employment opportunities, constitutes a factor in the propensity for re-migration. This result also coincides with the findings from the literature, which places unemployment as one of the main motivating reasons for migration and answers the research question (i).

As a result, which is also explicitly stated, returned migrants are forced to return mainly due to insufficient income, which is also related to unemployment or low employment and the country poor economic development, but also to the lack of services, poor health care, but also difficulties in reintegration seem to play a role.

Regarding the measures taken by the Albanian authorities and institutions to facilitate the return, about 60% of migrants say that these measures do not exist at all or need to be improved. The main facilities that migrants consider necessary to return and invest in, which would increase the chances of their stay, are the procedural, tax, and customs facilities, and the provision of loans due to insufficient capital, but not only. According to migrants, these

measures do not exist or need to be improved, which encourages Albanians to emigrate. It also answers research questions (ii), (iii), and (iv).

The study shows that people who are unemployed and those who were self-employed in their country of migration have a stronger tendency to leave. In summary, it is the unhappiness felt by migrants returned to their country that forces them to re-emigrate to where they came from or to some other destination country.

Regarding investment, those returnees who think that land supply and lack of capital are investment factors have a kind of tendency to leave but most are more inclined to stay than to leave. We estimate that the vast majority of returning migrants do not link their return with investment but with employment and this is normal because most of the returned Albanians do not come with an investment project but the goal of most of them is simply employment.

Finally, the tendency of returned Albanian migrants to re-emigrate is quite evident (25% of them wishing to leave) versus 21% of those who do not want to return, and there are strong reasons for this. For the rest, though not explicitly stated, there is a reasonable chance to consider re-migrating. This result gives also a clear answer to our research question (v).

Besides, the study shows that the tendency for re-emigration depends on the economic situation in the last country of migration. If this situation is considered poor the tendency to leave is reduced and this result is consistent as well with the findings from the literature.

Quite new in this study is the use of statistical models to identify reintegration factors and assess the significance of the findings. The existing literature on migration is dominated by the descriptive study approach and we hereby want to emphasize the importance and the need for greater use of modeling and statistical inference for identifying reciprocal relationships and obtaining more reliable results.

6. Conclusions

This study focuses on the tendency for migration of returned Albanian migrants, as well as the factors that shape this tendency. The study is based on data collected by INSTAT in 2013 through a special survey of 1878 migrants returning from migration. The study uses the method of studying the literature on the table, descriptive and regressive statistics.

The study highlights and confirms the findings of the literature that during the Albanian transition the tendency for migration has remained strong and the number of Albanian migrants around the world is large. According to IOM (2019) in 2019 Albania was part of the top 20 countries in the world with about 30% of the population being in migration.

In addition to continuous migration, there has been the phenomenon of the return of a significant number of Albanian migrants to their homeland. They return for various reasons, but two of them are job loss in the countries where they have emigrated and the second reason is the plan or desire to invest in Albania.

The study highlights a high degree of propensity to re-emigrate of returned migrants. The main reasons for this are the deteriorating economic situation or no prospect of improvement, as a result of poor economic development, lack of hope for a future in the country, as well as lack of jobs.

Important reasons are also the lack of supportive policies, namely the lack of fiscal and customs facilities, the lack of support for investment loans due to insufficient capital, the lack of services, weaknesses of the health system, and lack of political stability, weakness of infrastructure, inadequate institutional environment and bureaucracy.

As a result, a high percentage of migrants returning to Albania feel unhappy (about 30%) and unhappiness seems to be a significant driver of the Albanian returnees. The tendency of Albanian students studying abroad not to return to their homeland is also worrying.

As evidenced by the literature, government policies to reduce migration have been ineffective. The study notes that even policies to support returned migrants and reduce the propensity for re-migration have so far been ineffective. Monitoring and evaluation of migration-related strategies and policies are poorly assessed.

Policy implications

As the literature points out, the legal and policy framework for migration is deficient and needs to be further supplemented and improved. Monitoring and evaluation also need to be improved and made more transparent. The political agenda of the government should be in better sync with the agenda (problems, needs) of migrants. Institutions dealing with the administration or management of migrant issues need to be restructured, supplemented, and strengthened.

The country's economic development policies are essential to influence the tendency for migration and that of return of migrants to their homeland, therefore building and implementing mechanisms for their participation in the country's development policy-making would be important, because for bringing valuable experiences and capital they tend to foster innovative ideas and a developing mentality for the economy.

References

- [1] BANK OF ALBANIA (2019). A survey on remittances. https://www.bankofalbania.org/rc/doc/Fletepalosje_Remitancat_Shqip_2019_14709.pdf
- [2] BARJABA, K. (2004). Albania: Looking beyond borders. <https://www.migrationpolicy.org/article/albania-looking-beyond-borders>
- [3] BARJABA, K. and BARJABA, J. (2015). Embracing Migration: The Migration-Development Nexus in Albania. <https://www.migrationpolicy.org/article/embracing-migration-migration-development-nexus-albania>
- [4] CASTELLI, F. (2018). Drivers of Migration: why do people move? *Journal of Travel Medicine*, 2018, 1-7. doi: 10.1093/jtm/tay040
- [5] DE SOTTO, H., GORDON, P., GEDESHI, I. and SINOIMERI, Z. (2002). Poverty in Albania: A Qualitative Assessment. World Bank Technical Paper No. 520. Washington, DC: World Bank. <https://openknowledge.worldbank.org/handle/10986/15234>
- [6] DOMACHOWSKA, A. (2019). Albanian Migration as a Post-Totalitarian Legacy <https://www.ejournals.eu/pliki/art/14688/>
- [7] DRAGOTI, E. and ISMAILI, E. (2018). Albanian and International Migration. UBT International Conference, Kosovo, 2018. <https://knowledgecenter.ubt-uni.net/cgi/viewcontent.cgi?article=2033&context=conference>
- [8] ELISEEVA, I. I. and JUZBASHEV M. M. (2004). *Obshaja Teorija Statistiki*, 5 ed., Moskva. Eurostat (2021). Official Statistics: Asylum Statistics. http://ec.europa.eu/eurostat/statistics-explained/index.php/Asylum_statistics
- [9] EXIT NEWS 01-12-2020 at 21:04.: <https://exit.al/cilat-janë-arsyet-e-emigrimit-të-shqiptarëve/>
- [10] GEDESHI, I. and KING, R. (2018). New trends in potential migration from Albania. Friedrich-Ebert-Stiftung, Tirana. <https://library.fes.de/pdf-files/bueros/albanien/15272.pdf>

- [11] GEDESHI, I. and JORGONI, I. (2012). Social impact of migration and rural-urban migration in central and Eastern Europe. EU, GVG. <https://ec.europa.eu/shoqëror/BlobServlet?docId=8819&langId=en>
- [12] GUJARATI, D. N. (2003). Basic Econometrics, 4th edition, McGraw-Hill.
- [13] INFORMIM.AL (2020). <https://informim.al/raporti-nga-qendra-ekonomike-shoqërore-79-e-të-rinjeve-ikin-nga-Shqipëria-mungesa-e-perspektives-dhe-mundësive/>
- [14] INSTAT&IOM Albania (2014). Return Migration and Reintegration in Albania. http://www.instat.gov.al/media/2965/return_migration_and_reintegration_in_albania_2013_.pdf
- [15] IOM (2019). WORLD MIGRATION REPORT 2020. https://publications.iom.int/system/files/pdf/wmr_2020.pdf
- [16] IOM Albania (2016). Social and Economic Profile of the Return Migrants in Albania. Tirana, 2016
- [17] IOM Albania (2020). ANKETA KOMBËTARE E MIGRACIONIT NË FAMILJE NË SHQIPËRI. https://albania.iom.int/sites/default/files/publication/Zhvillimi_i_anket%C3%ABs_komb%C3%ABtare_t%C3%AB_migracionit_n%C3%AB_familje_ALB.pdf
- [18] MPB (2015). Albania-Extended Migration Profile 2012-2014
- [19] MPB (2019). The National Strategy of Migration and Action Plan 2019-2022. <https://albania.iom.int/sites/default/files/publication/THE%20NATIONAL%20STRATEGY.pdf>
- [20] OĞUZHAN OKUMUŞ, M. (2020). How Berlin attracts the Turkish "New Wave": Comparison of economic and socio-cultural pull factors for highly skilled migrants. Working Paper No. 142/2020. <https://www.econstor.eu/bitstream/10419/217223/1/1698136617.pdf>
- [21] OSMANI, M., KAMBO, A. and SHTEPANI, A. (2021). Descriptive and Inferential Statistics, Tirana.
- [22] SIMPSON, N.B. (2017). Demographic and economic determinants of migration. IZA World of Labor 2017: 373 doi: 10.15185/izawol.373, | June 2017 | wol.iza.org
- [23] THE WORLD BANK (2011). Migration and Remittances Fact book 2011, World Bank, Washington DC
- [24] THET, K. K. (2014). Pull and Push Factors of Migration: A Case Study in the Urban Area of Monywa Township, Myanmar
- [25] WITTE, R. S. and Witte, J. S. (2017). Statistics, 11th ed., John Wiley & Sons, Inc.
- [26] WOOLDRIDG, J. M. (2016). Introductory Econometrics-A modern Approach, 6th edition, Cengage Learning.